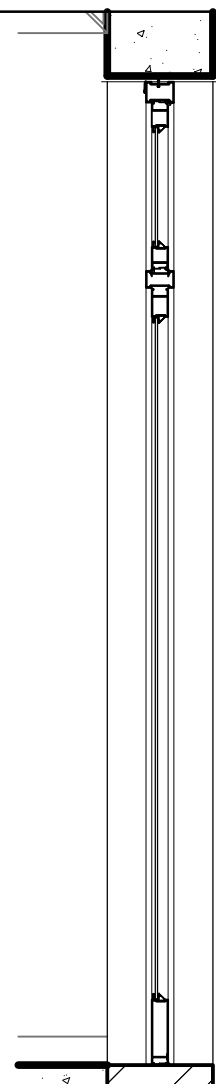
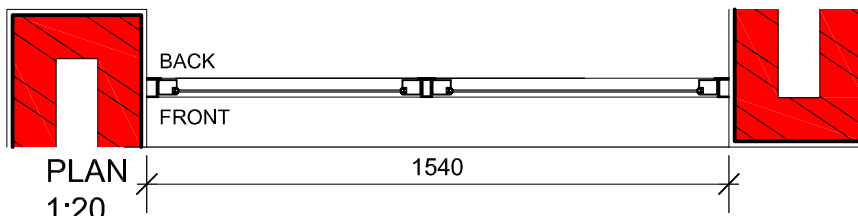


ELEVATION
1:20



SECTION
1:20



PLAN
1:20

REF NUMBER	TYPE H
QUANTITY	1
LOCATION	W22
REVEAL	AS INDICATED ON PLAN
FINISH	Aluminium window with fanlights
GLAZING	6.38mm double safety Glazing as per X.A calculations for SANS compliance.
FUNITURE	AS PER MANUFACTURER'S SPEC.
ALL DIMENSIONS TO BE CHECKED ON SITE PRIOR TO MANUFACTURE	

RENNIE SCURR ADENDORFF ARCHITECTS

cc ok 90/06711/23
15 New Church Street, Cape Town, 8001
P O Box 16390 Vlaeberg 8018
Tel (021) 423 0328 : Fax (021) 424 9396
e-mail : cape@archrsa.com website : www.archrsa.com
Copyright © (2007) Rennie Scurr Adendorff Architects.
All rights reserved

Window Type H

DRAWING

PROJECT : New Office for South African Environmental
Observation Network
CLIENT : **National Research Foundation**

01544

PROJECT NO.

AON

DRAWN

W-6207

DRAWING

2019-09-17

DATE

A

REV

1:20

SCALE